

# Flansch-Stahlkugelhahn Baureihe ARTSKH2F4/F5

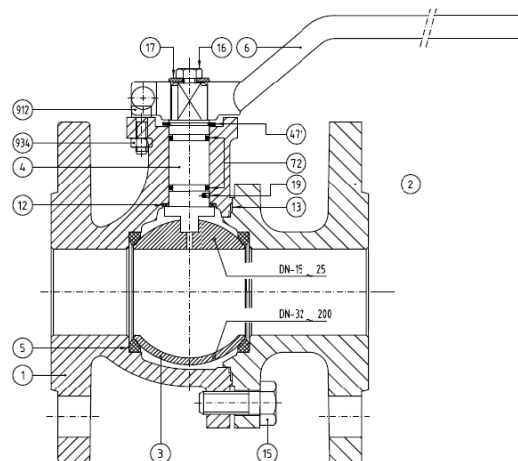
## 2-teilig

**Size :** DN15 to DN200  
**Connection :** Flanges PN10/16 RF  
**Min Temperature :** -10°C  
**Max Temperature :** +200°C  
**Max Pressure :** 16 Bars  
**Specifications :** PTFE seat  
 ISO 5211 mounting pad  
 Anti blow-out stem  
 Full bore  
 Stainless steel ball  
 ATEX



**Materials :** Cast iron EN GJL-250

Item	Designation	Materials
1	Body	Cast iron EN GJL-250
2	Ends	Cast iron EN GJL-250
3	Ball DN15-25	AISI 303
3	Ball DN32-200	AISI 304
4	Stem	
5	Seat	PTFE
6	Handle	Steel
12	Washer	PTFE
13	Body gasket	PTFE
15	Body screw	Steel DIN 933 5.6
16	Handle screw	Steel DIN 933 5.6
17	Handle Washer	Steel
19	Antistatic device	Stainless steel
72	O ring	FKM
471	Cicrlip	Steel DIN 471
912	Stop screw	Steel DIN 912 8.8
934	Nut	Steel DIN 934.8



**FLOW COEFFICIENT Kvs ( in M3/H ) :**

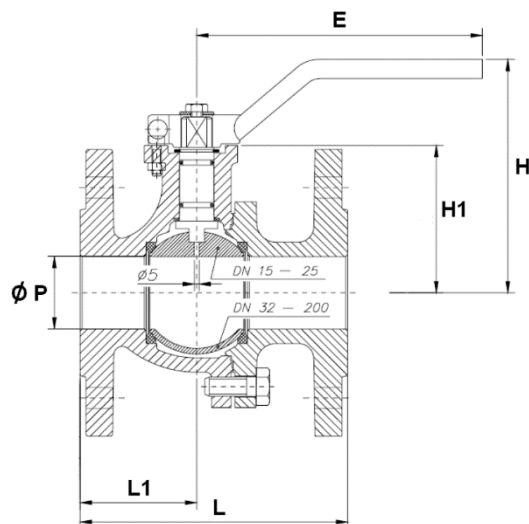
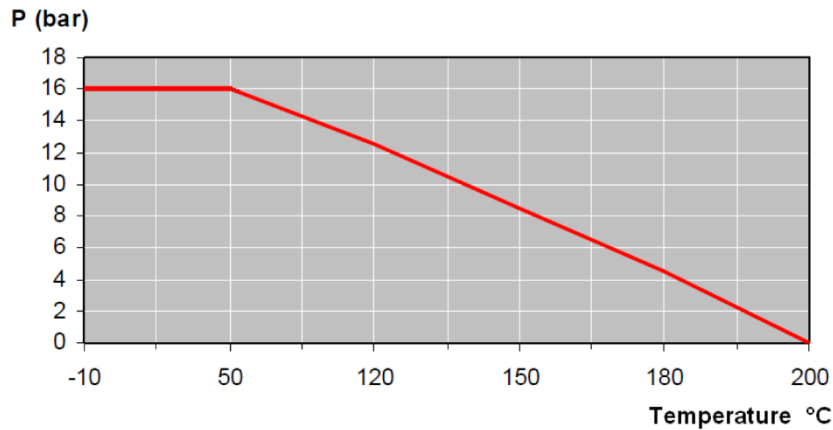
DN	15	20	25	32	40	50	65	80	100	125	150	200
Kvs ( M3 / H )	37.4	74.8	105	176	223	416	660	1200	1980	3600	5040	10890

**TORQUE VALUES ( in Nm without safety coefficient ) :**

DN	15	20	25	32	40	50	65	80	100	125	150	200
Torque ( Nm )	6	6	11	12	26	41	41	71	119	190	220	450

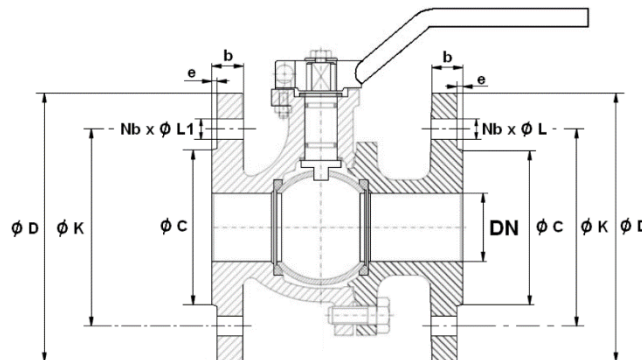
# Flansch-Stahlkugelhahn Baureihe ARTSKH2F4/F5

*PRESSURE / TEMPERATURE GRAPH ( STEAM EXCLUDED ) :*

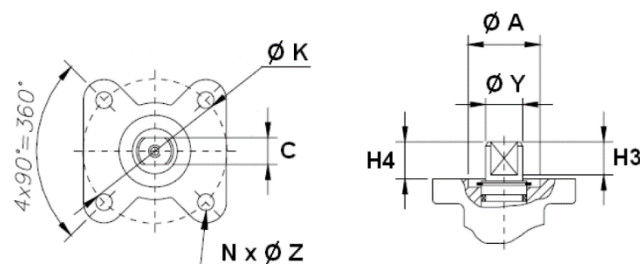


DN	15	20	25	32	40	50	65	80	100	125	125	150	150	200
Ø P	13	17	24	31	38	50	65	80	100	125	125	150	150	200
L	115	120	125	130	140	150	170	180	190	200	325	210	350	400
L1	49	55.5	51.5	53	61	62	81.5	79	94	93	120.5	100	155	190
H	92	95.5	102.2	114.7	119	127	141	151.5	176.5	208	208	254.5	254.5	293.5
H1	48.5	53	59.5	72	77	85	98	108.5	134	165	165	190	190	229
E	170	170	170	170	302.5	302.5	335	335	350	350	350	500	500	500
Weight (Kg)	2.12	2.72	3.62	5.32	6.9	9	11.68	14.68	20.23	33	33.73	47.5	49.77	81.77
Ref.	507015	507020	507025	507032	507040	507050	507065	507080	507100	507125	507126	507150	507151	507200

# Flansch-Stahlkugelhahn Baureihe ARTSKH2F4/F5



DN	15	20	25	32	40	50	65	80	100	125	150	200
$\phi C$	45	58	68	78	88	102	122	138	158	188	212	268
$\phi D$	95	105	115	140	150	165	185	200	220	250	285	340
$\phi K$	65	75	85	100	110	125	145	160	180	210	240	295
Nb x $\phi L$	4 x 14	4 x 14	4 x 14	4 x 18	4 x 18	4 x 18	4 x 18	8 x 18	8 x 18	8 x M16	8 x M20	12 x 22
Nb x $\phi L1$	4 x 14	4 x 14	4 x 14	4 x 18	4 x 18	4 x 18	4 x 18	8 x 18	8 x 18	8 x M16	8 x M20	12 x 22
b	14	16	16	16	16	18	18	20	20	22	22	24
e	2	2	2	2	3	3	3	3	3	3	3	3



DN	15	20	25	32	40	50	65	80	100	125	150	200
$\phi K$	42	42	42	42	42	42	70	70	70	70	102	102
ISO	F04	F04	F04	F04	F04	F04	F07	F07	F07	F07	F10	F10
N x $\phi Z$	4 x 5	4 x 5	4 x 5	4 x 5	4 x 5	4 x 5	4 x 8	4 x 8	4 x 8	4 x 8	4 x 10	4 x 10
C	7	7	7	7	12	12	13	13	16	16	20	20
$\phi Y$	10	10	10	10	16	16	18	18	22	22	28	28
H3	5.5	5	5	5.5	16	16	19	19	20	20	27	27
H4	7.5	6	6.2	6.7	15	15	18	18	19	19.5	24.5	24.5
$\phi A$	19	19	21	21	30	30	35	35	38	38	50	50